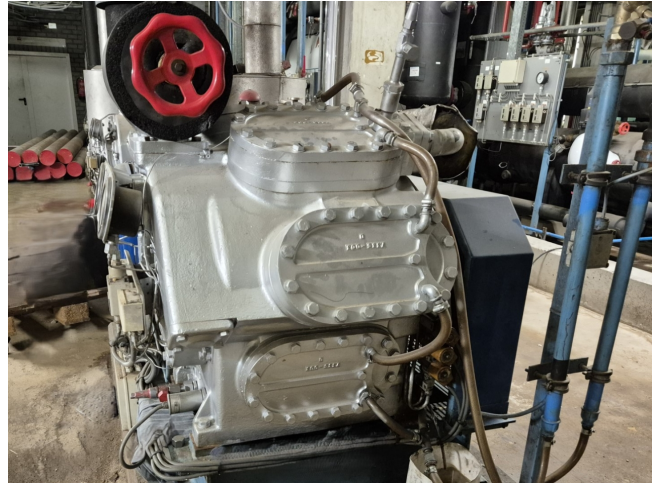


# Sabroe SMC 108L

## Specifications

Marque	Sabroe
Le type	SMC 108L
Réfrigérant	NH 3 (ammonia)
kW at +10°C/+40°C	494,8
kW at 0°C/+40°C	327,2
kW at -5°C/+40°C	260,4
kW at -10°C/+40°C	203,5
Démarrage à vide	✓
Contrôle de capacité	✓
Sur le châssis en acier	✓
Interrupteurs de sécurité	✓
de pression	
Manomètres	✓
Séparateur d'huile	✓
Voyant	✓
Electrovanne	✓
Remarques	Y.o.b. 1986
Remarques	*Capacity based on R717 (Ammonia).
Tailles	2200x1000x2130 mm (LxWxH)
Stock	1



## Description

### Used Sabroe SMC 108L

Used Sabroe SMC 108L reciprocating compressor on NH3 (Ammonia). Complete with a Leroy Somer P 250 S-4 electric motor - 50 Hz - 75 kW - 1465 RPM, oil separator with a volume of 65 liters, pressure and safety switches/gauges and a sight glass. \*Why choose for HOSBV? We are not only the largest used refrigeration specialist in Europe, but also, we deliver all equipment including an extensive test, warranty and an industrial cleaning. \*Optionally we can also perform a new paint job and arrange the logistics.

